



COMUNE DI RIMINI
PROVINCIA DI RIMINI

PIANO PARTICOLAREGGIATO DI INIZIATIVA
 PRIVATA SAN MARTINO IN RIPAROTTA
 SCHEDA 4/12 - ZONA OMOGENEA C2 PRG/94

PROPRIETA':

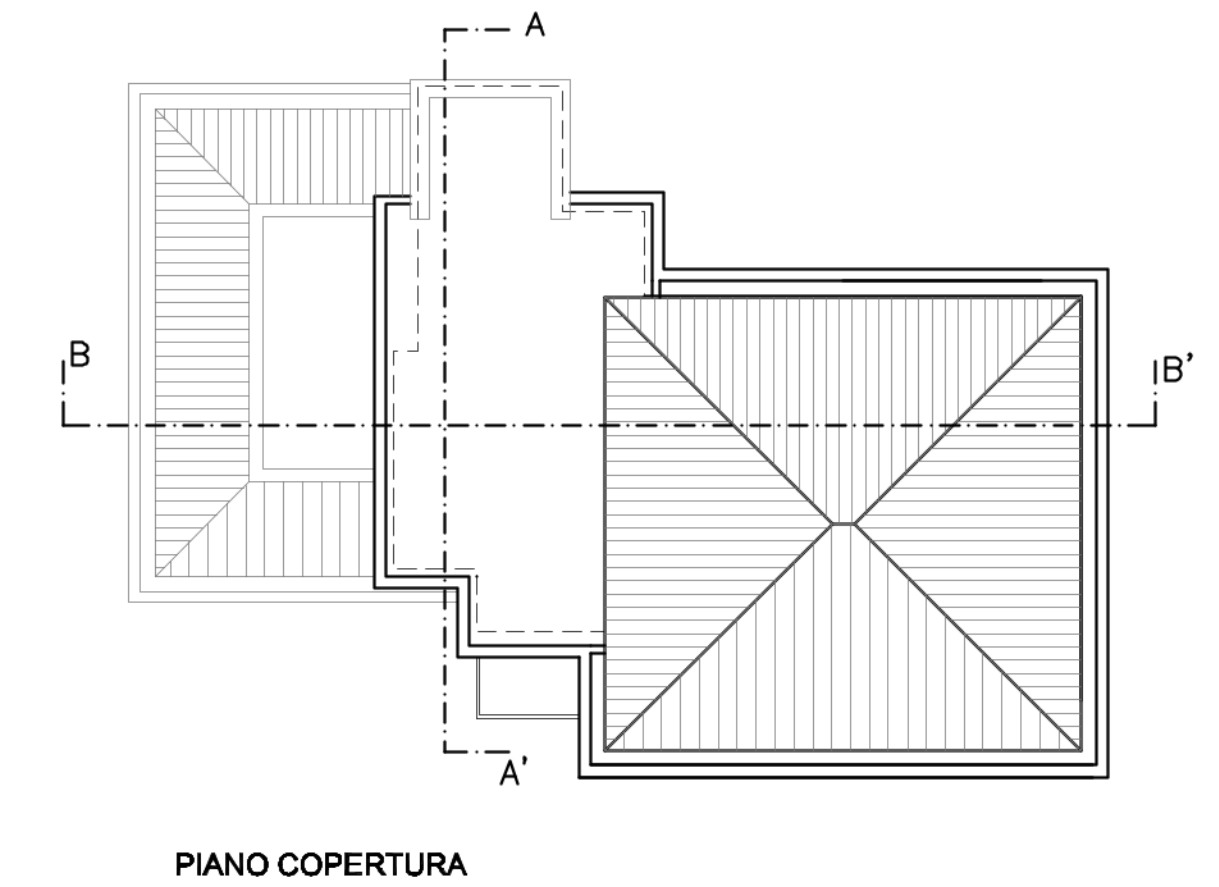
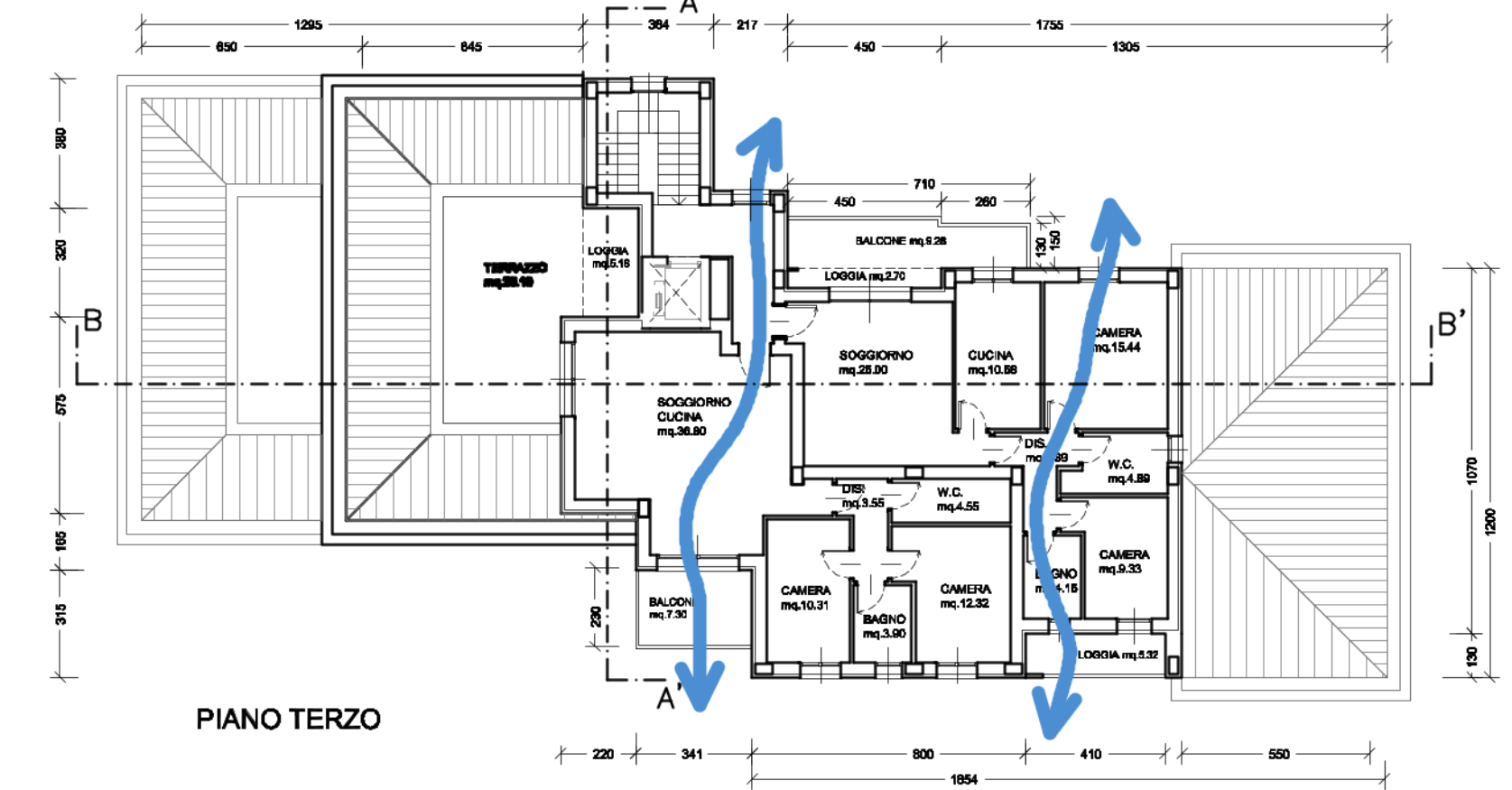
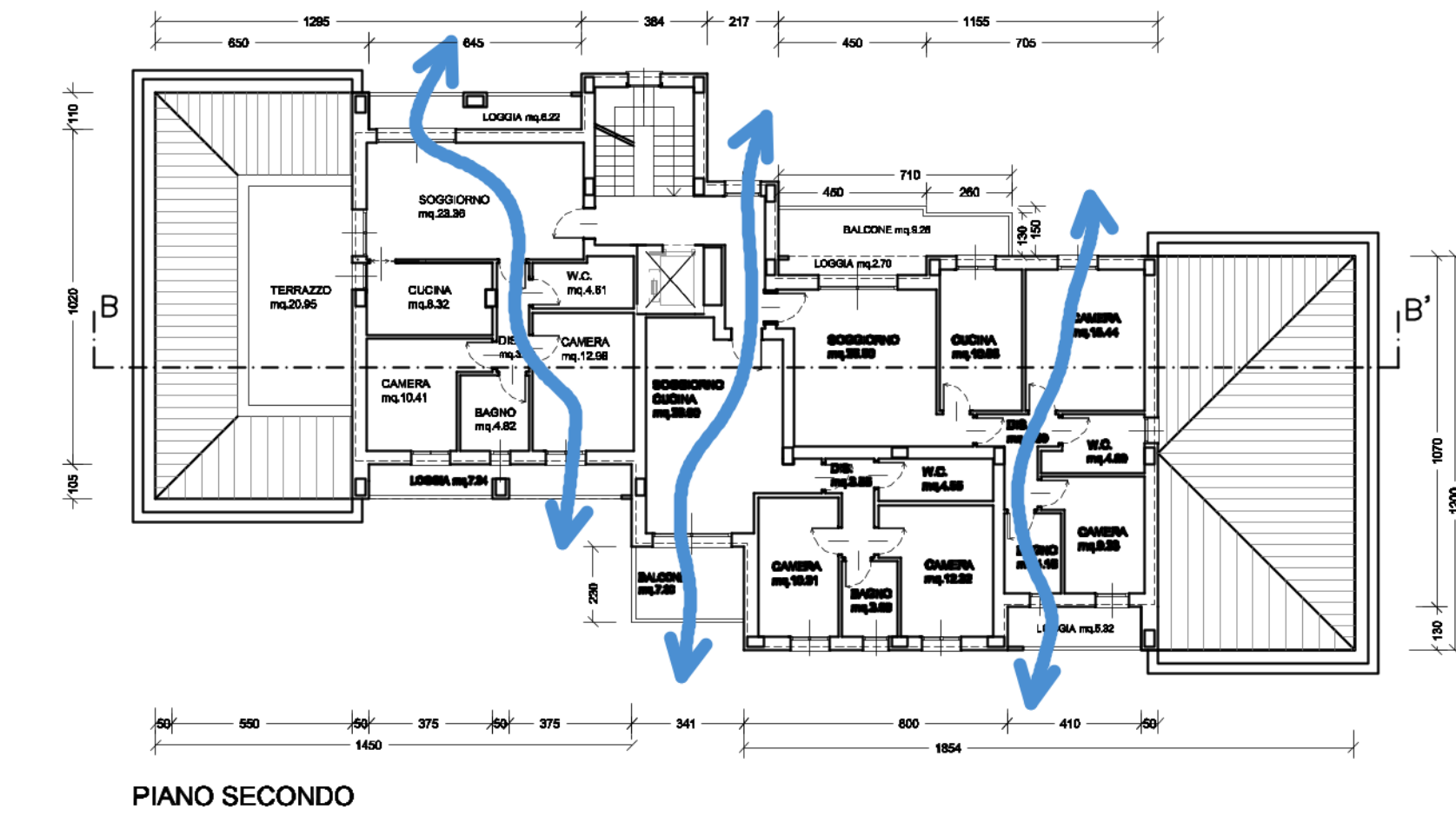
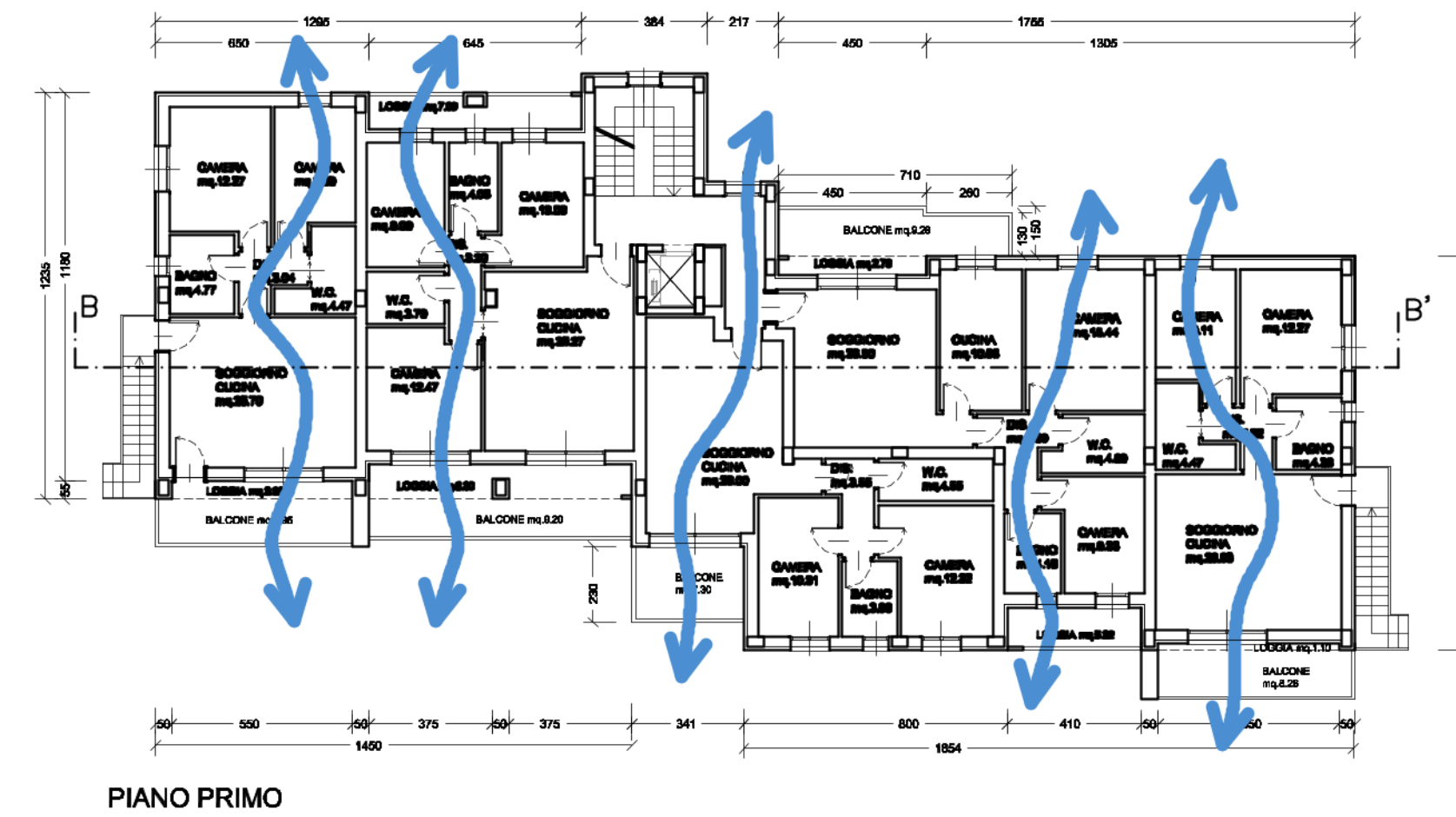
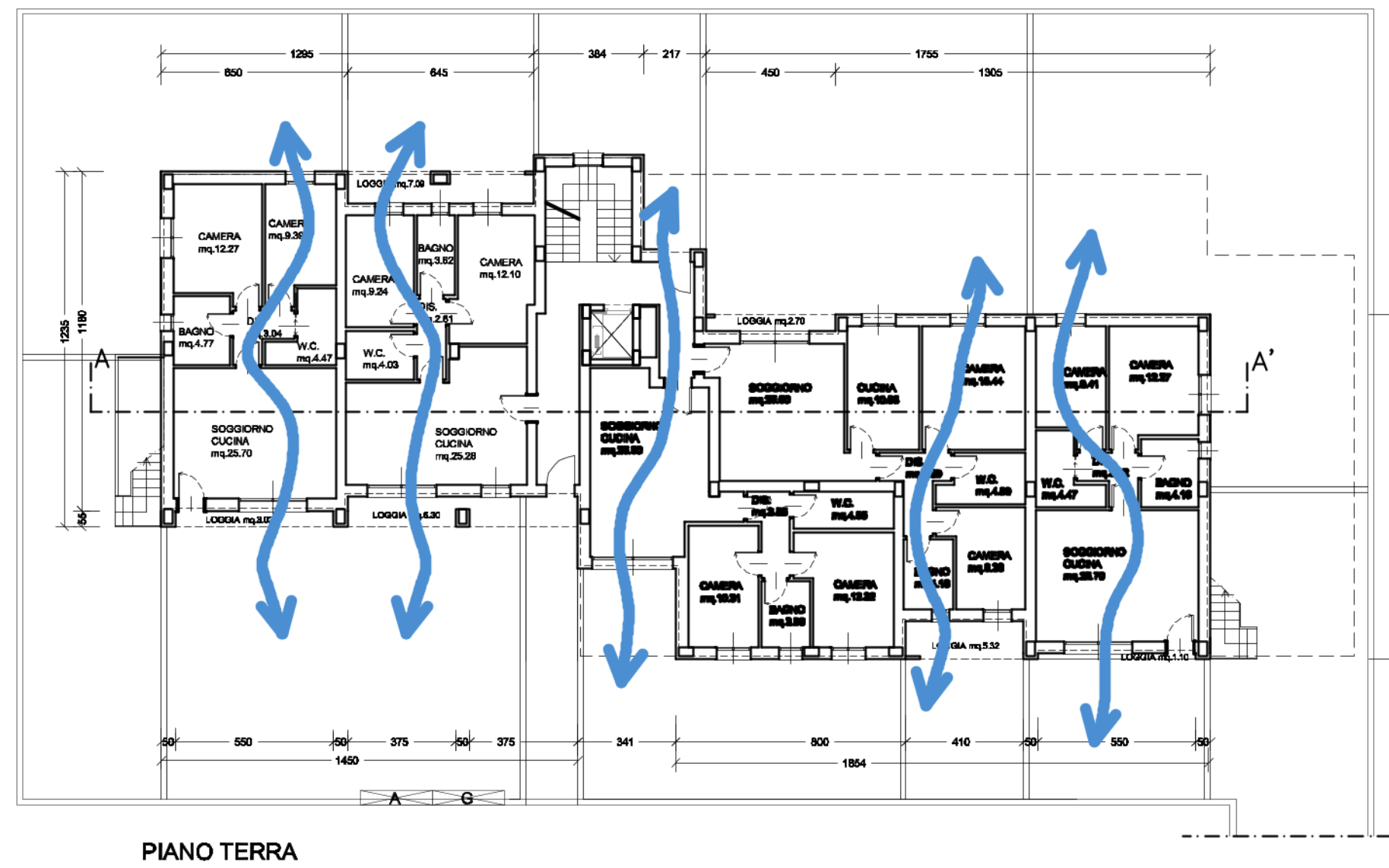
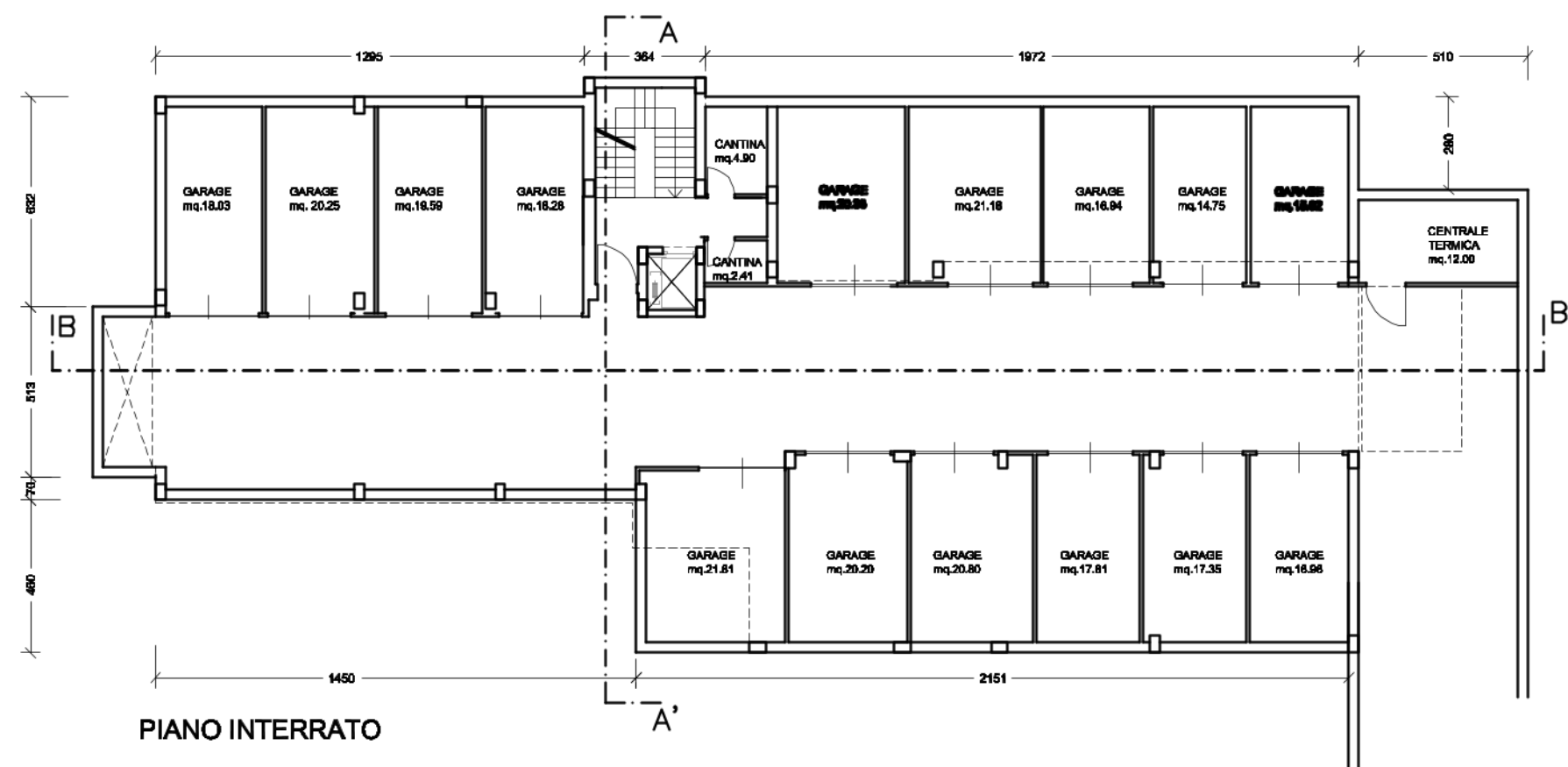
Proprietari Coinvolti:

OGGETTO:
 - TIPOLOGIA EDILIZIA
 UMI A - E

TAV:
05

Fg.51
 mappale 297 - 1341 (PARTE) SCALA: 1:200 DATA: OTTOBRE 2014

MASSIMO FRATERALI
 ARCHITETTO
 Studio
 Via Flaminia 98 RIMINI
 tel.0541-307876 fax:0541-302622
 e-mail: architetto@fraternali.net



VIA FLAMINIA 98 RIMINI

