

Date: 29/01/2020

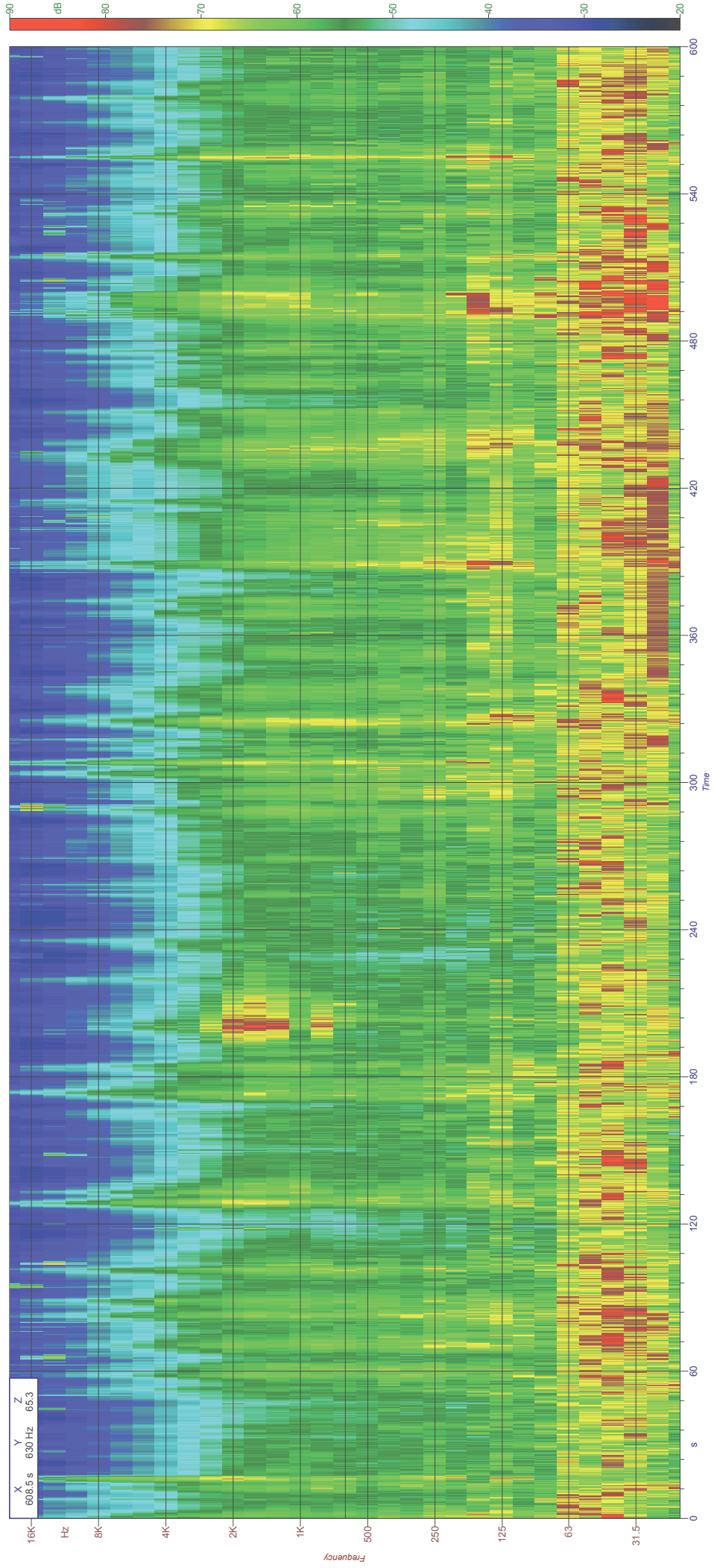
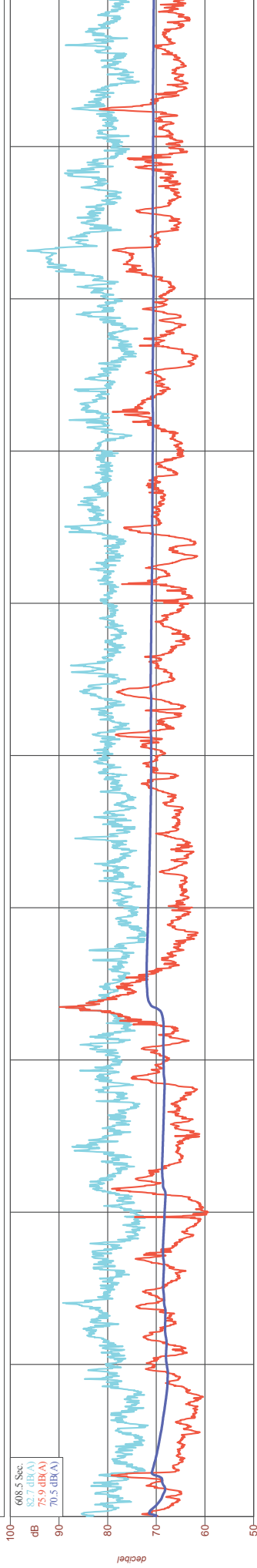
Ora: 11:12:28

LAEC: 70.5

LAF MAX: 89.9

rmimi_2020_01_29_1
1/3 Ottava CH1 - OVERALL
Lineare

rmimi_2020_01_29_1
1/3 Ottava CH1 - OVERALL
A - Running Leq



Date: 29/01/2020

Ora: 11:32:23

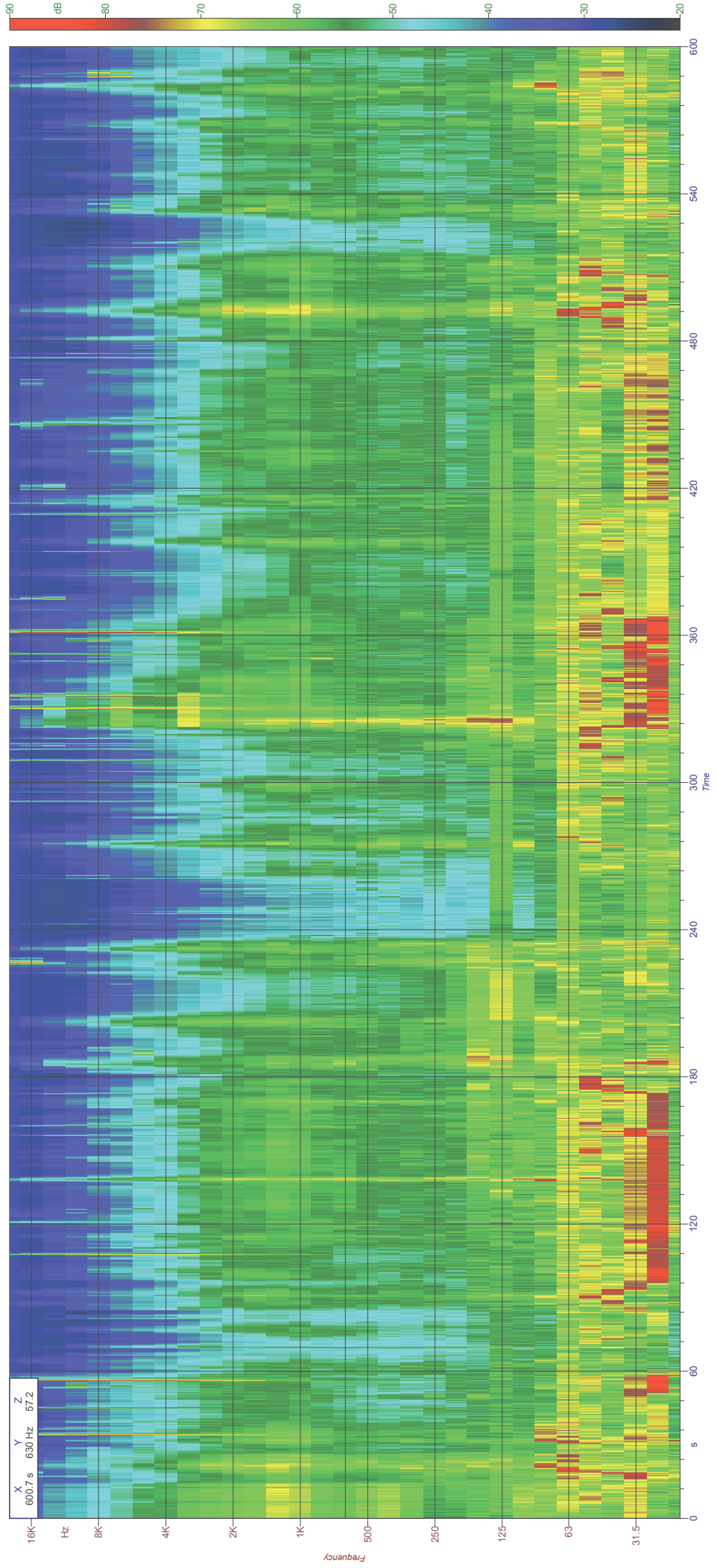
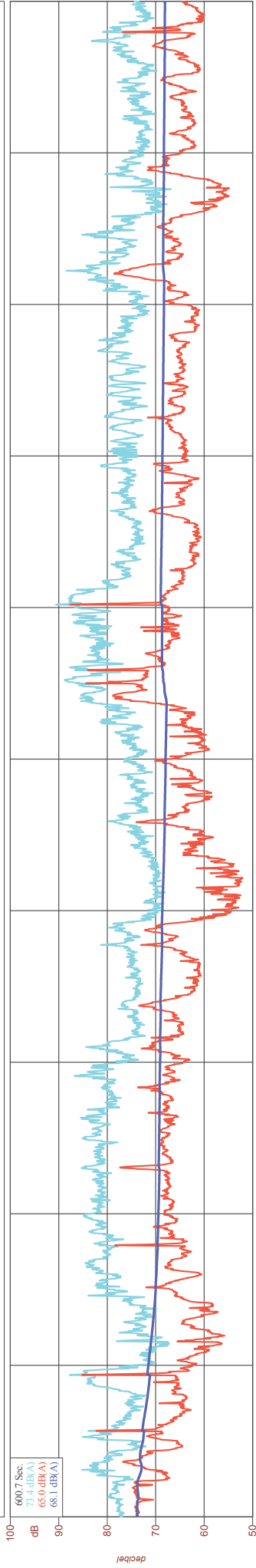
LAEC: 68.1

LAF MAX: 87.7

nmml_2020_01_29_2
1/3 Ottawa CH1 - OVERALL
Lineare

nmml_2020_01_29_2
1/3 Ottawa CH1 - OVERALL
A

nmml_2020_01_29_2
1/3 Ottawa CH1 - OVERALL
A - Running Leq



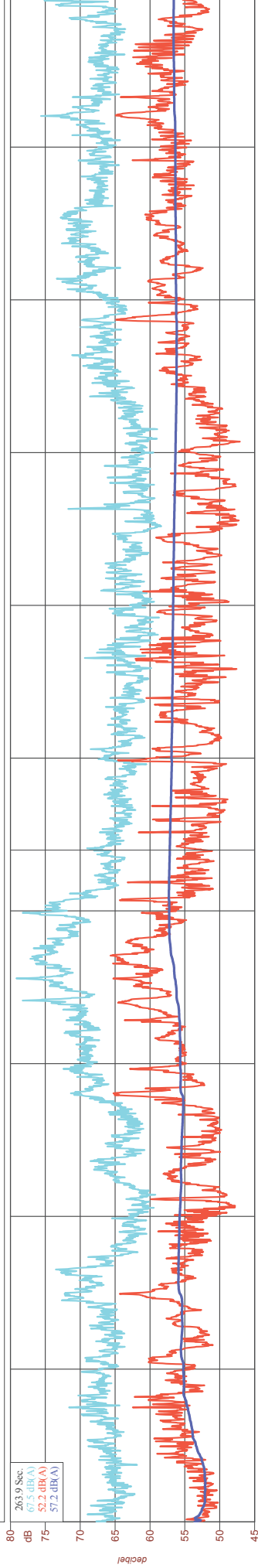
Date: 29/01/2020

Ora: 11:50:52

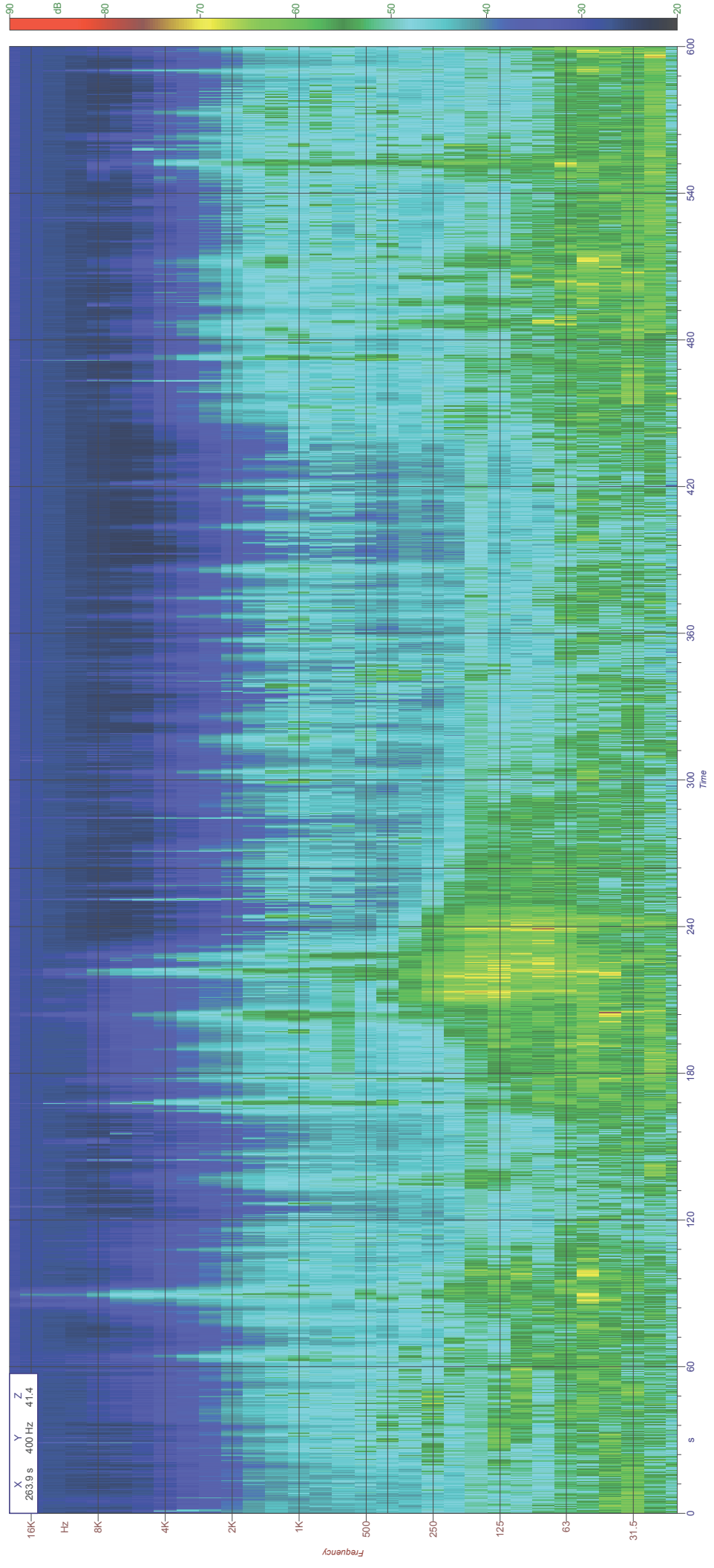
LAEC: 56.6

LAF MAX: 65.7

rimini_2020_01_29_3
1/3 Ottava CH1 - OVERALL
Lineare



263.9 Sec
65.5 dB(A)
52.2 dB(A)
57.2 dB(A)



X
263.9 s 400 Hz 41.4

Date: 29/01/2020

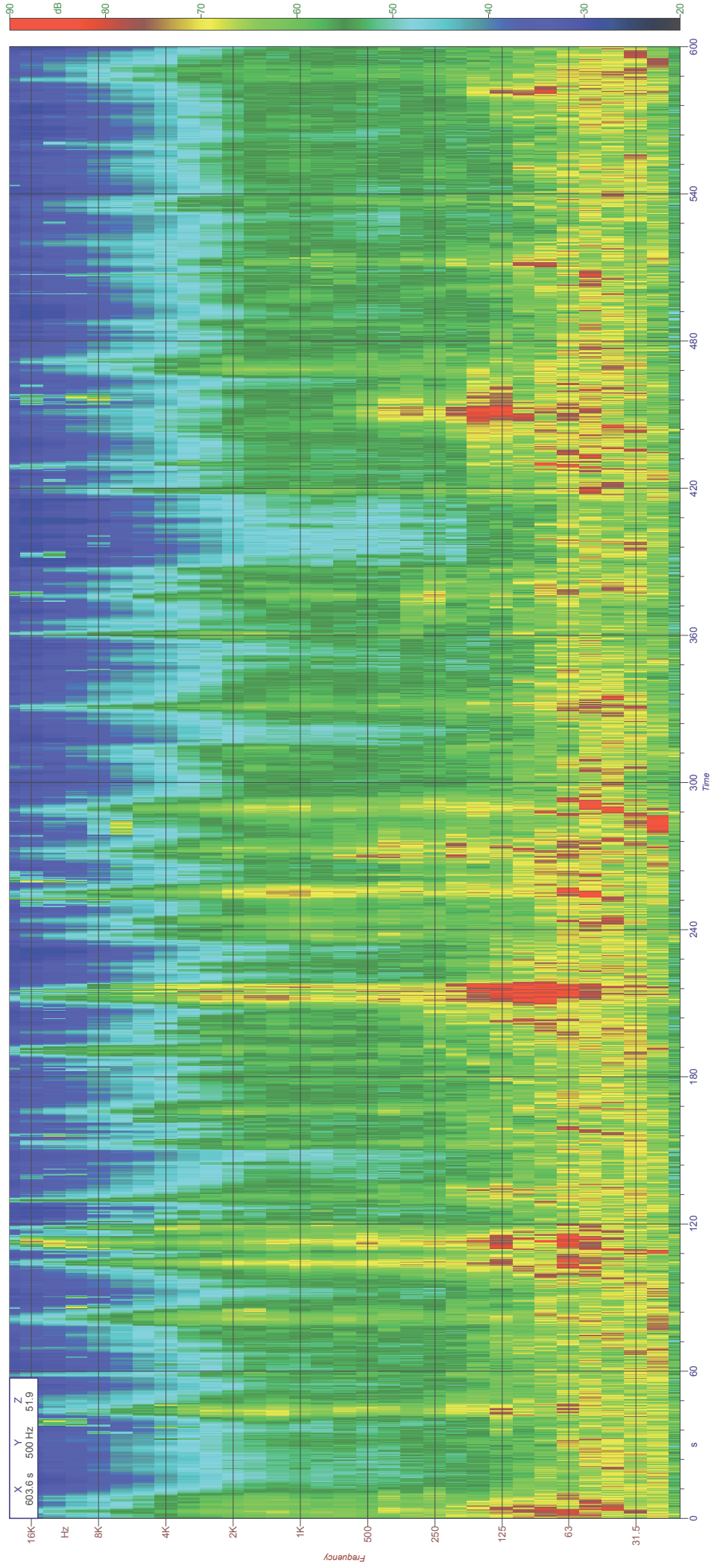
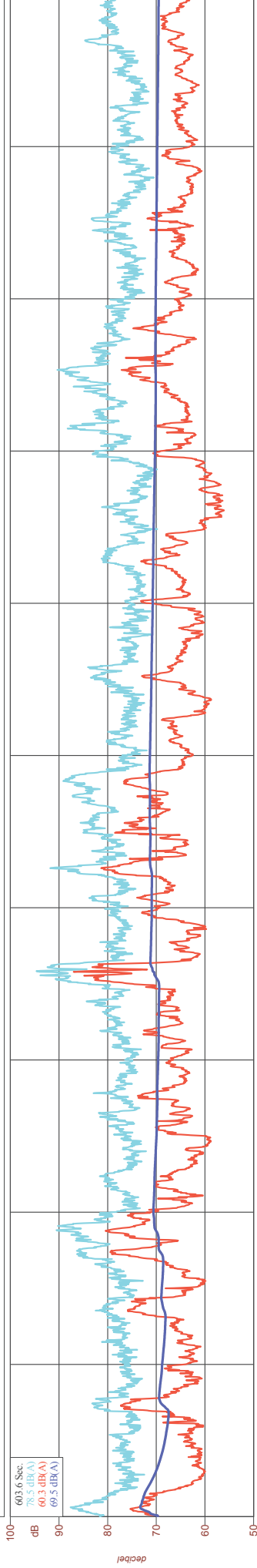
Ora: 12:22:55

LAEC: 69.5

LAF MAX: 87.0

nmiml_2020_01_29_4
1/3 Ottava CH1 - OVERALL
Lineare

nmiml_2020_01_29_4
1/3 Ottava CH1 - OVERALL
A - Running Leq



Date: 29/01/2020

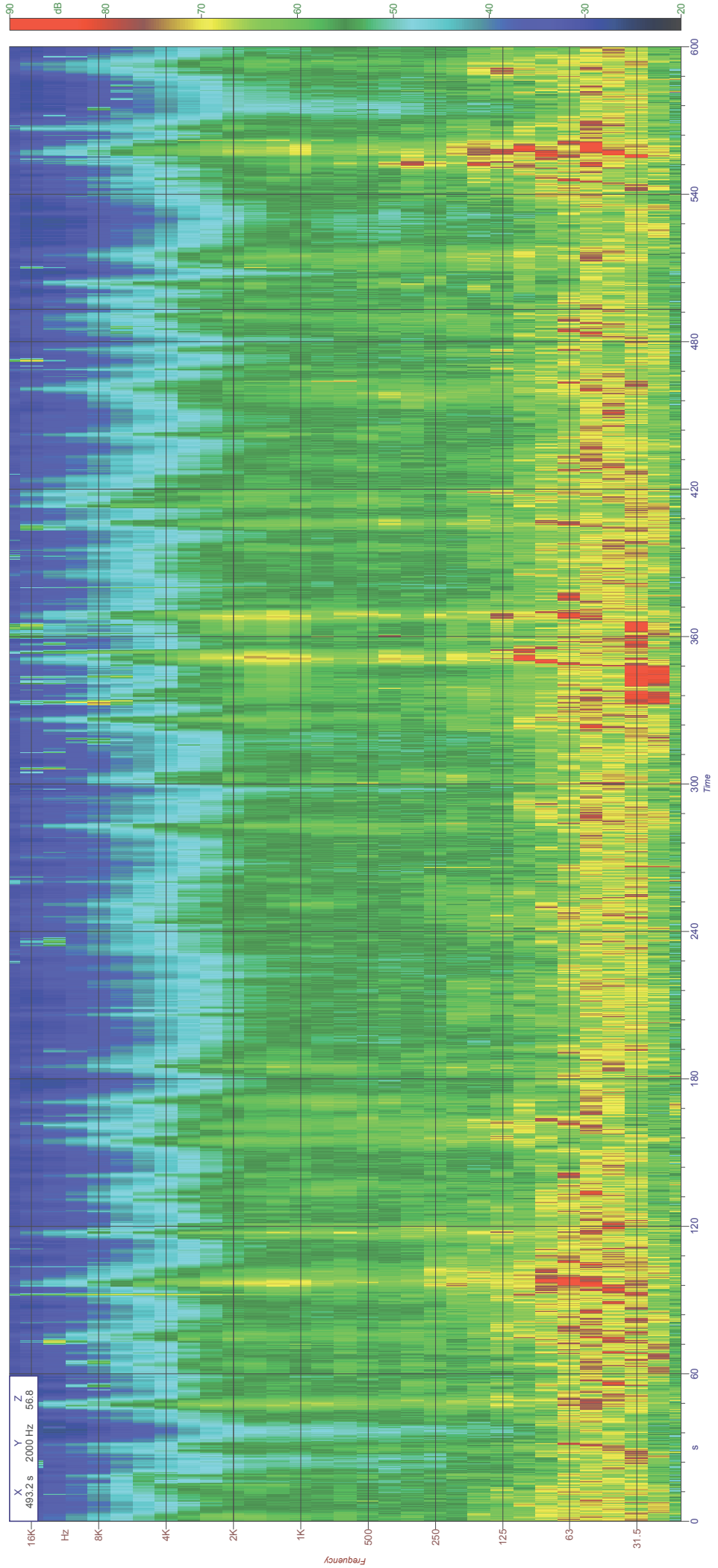
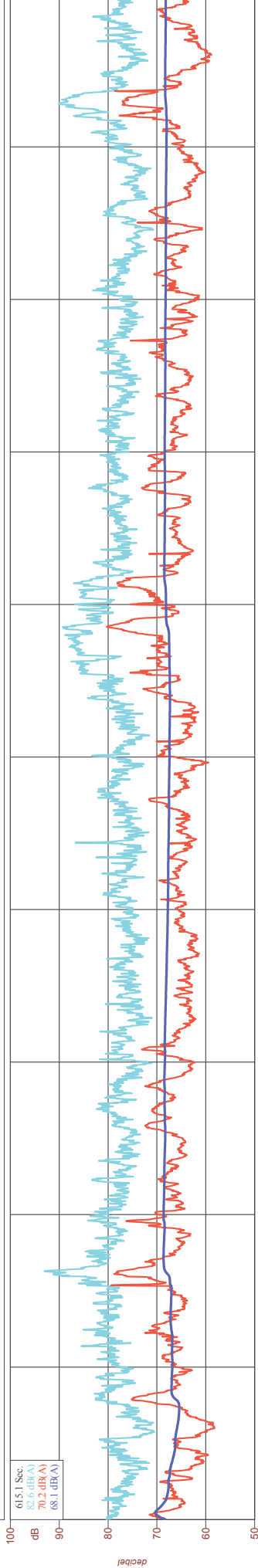
Ora: 12:42:53

LAEC: 68.2

LAF MAX: 80.3

— rmini_2020_01_29_5
 1/3 Ottava CH1 - OVERALL
 Lineare

— rmini_2020_01_29_5
 1/3 Ottava CH1 - OVERALL
 A - Running Leq



Date: 29/01/2020

Ora: 13:21:34

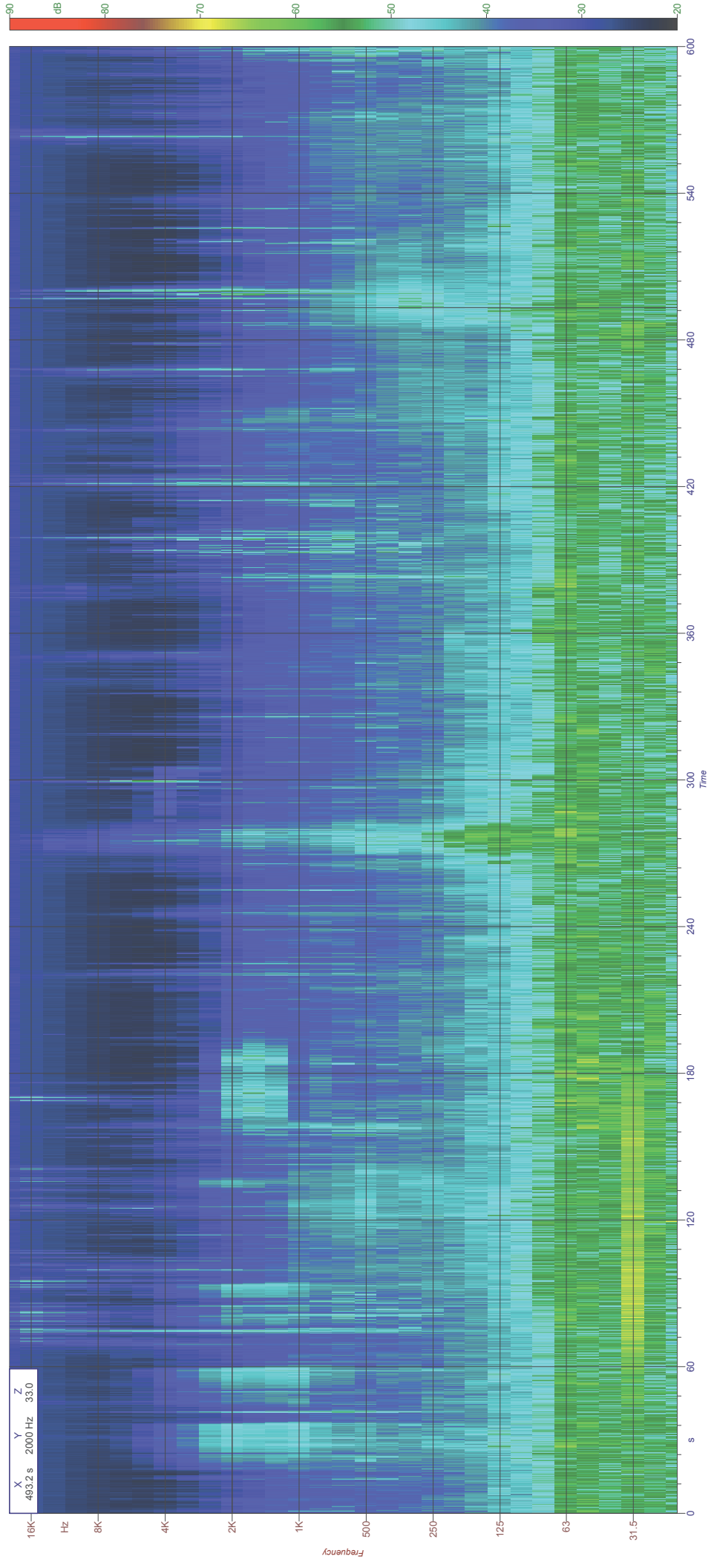
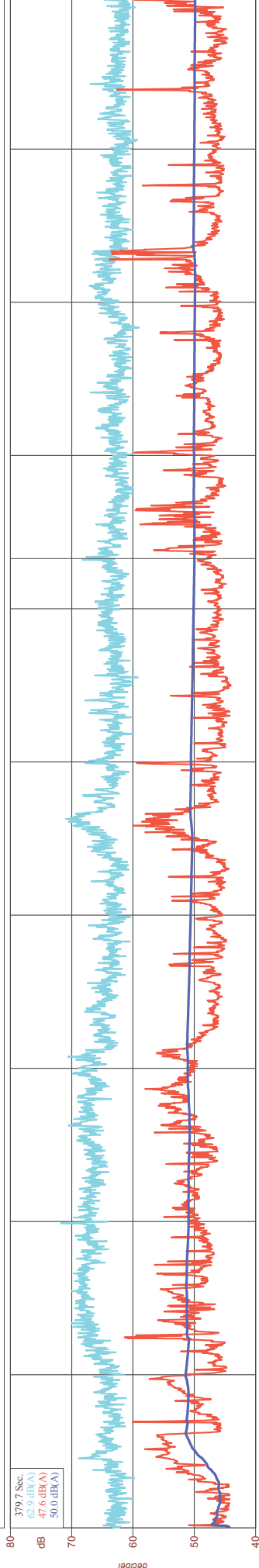
LAEC: 49.9

LAF MAX: 63.8

rmimi_2020_01_29_6
1/3 Ottava CH1 - OVERALL
Lineare

rmimi_2020_01_29_6
1/3 Ottava CH1 - OVERALL
A - Running Leq

379.7 Sec
63.9 dB(A)
47.6 dB(A)
50.0 dB(A)



Date: 03/02/2020

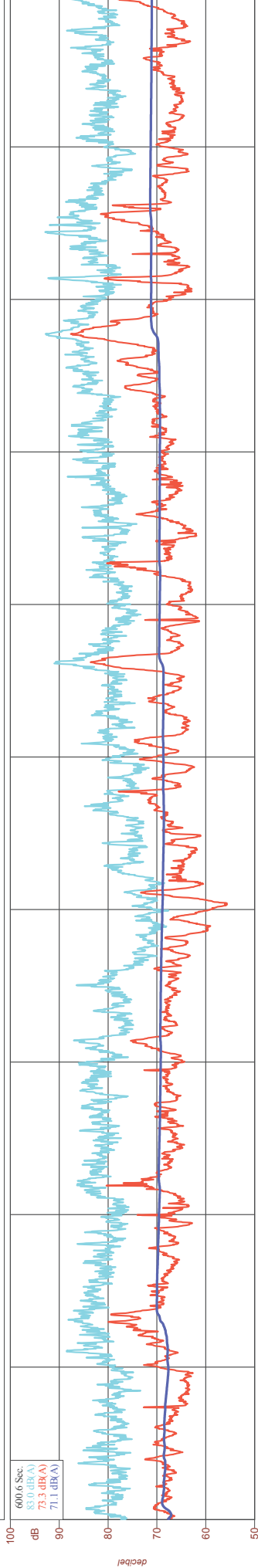
Ora: 11:02:31

LAeq: 71.1

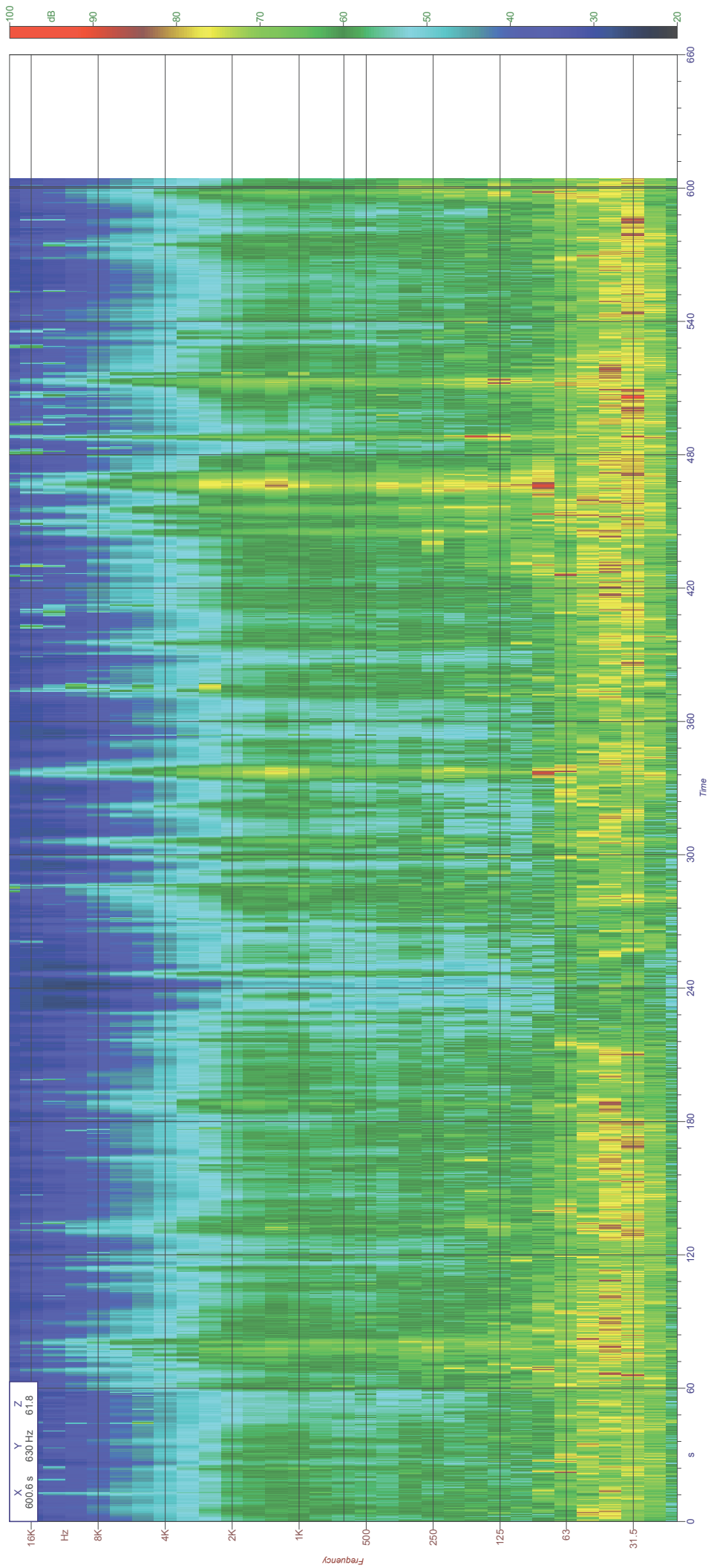
LAF MAX: 87.6

rmimi_2020_02_03_1
1/3 Ottava CH1 - OVERALL
Lineare

rmimi_2020_02_03_1
1/3 Ottava CH1 - OVERALL
A - Running Leq



600.6 Sec
93.0 dB(A)
73.3 dB(A)
71.1 dB(A)



X Y Z
600.6 s 630 Hz 61.8

Date: 03/02/2020

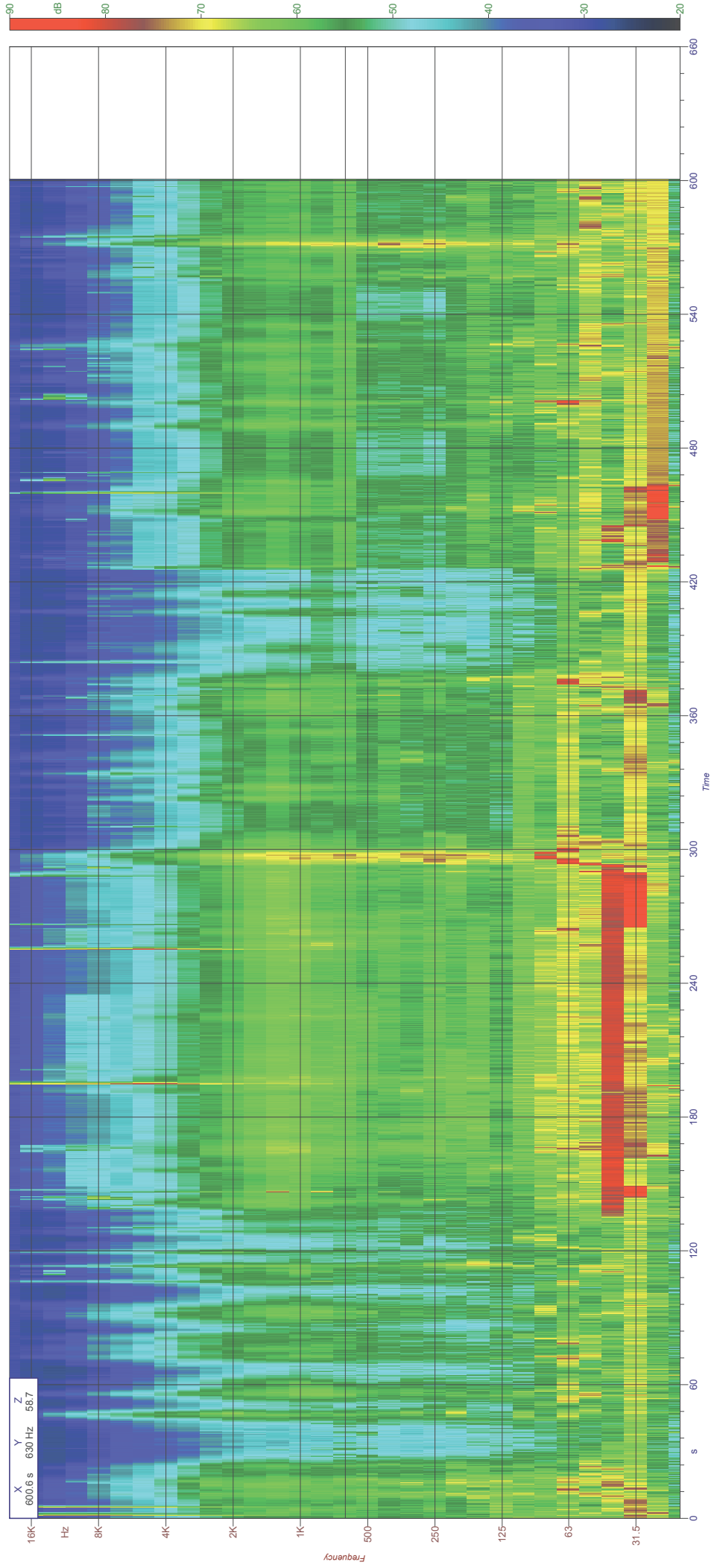
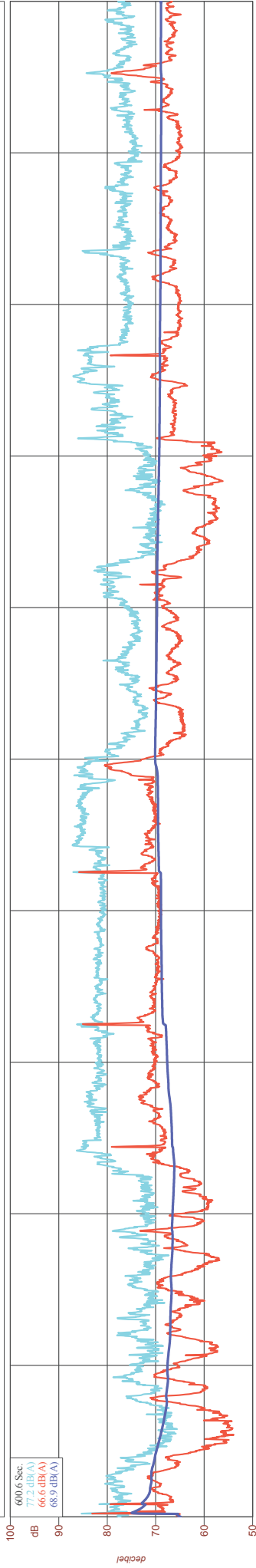
Ora: 11:20:30

LAEC: 68.9

LAF MAX: 85.9

rmimi_2020_02_03_2
1/3 Ottawa CH1 - OVERALL
Lineare

rmimi_2020_02_03_2
1/3 Ottawa CH1 - OVERALL
A - Running Leq



Date: 03/02/2020

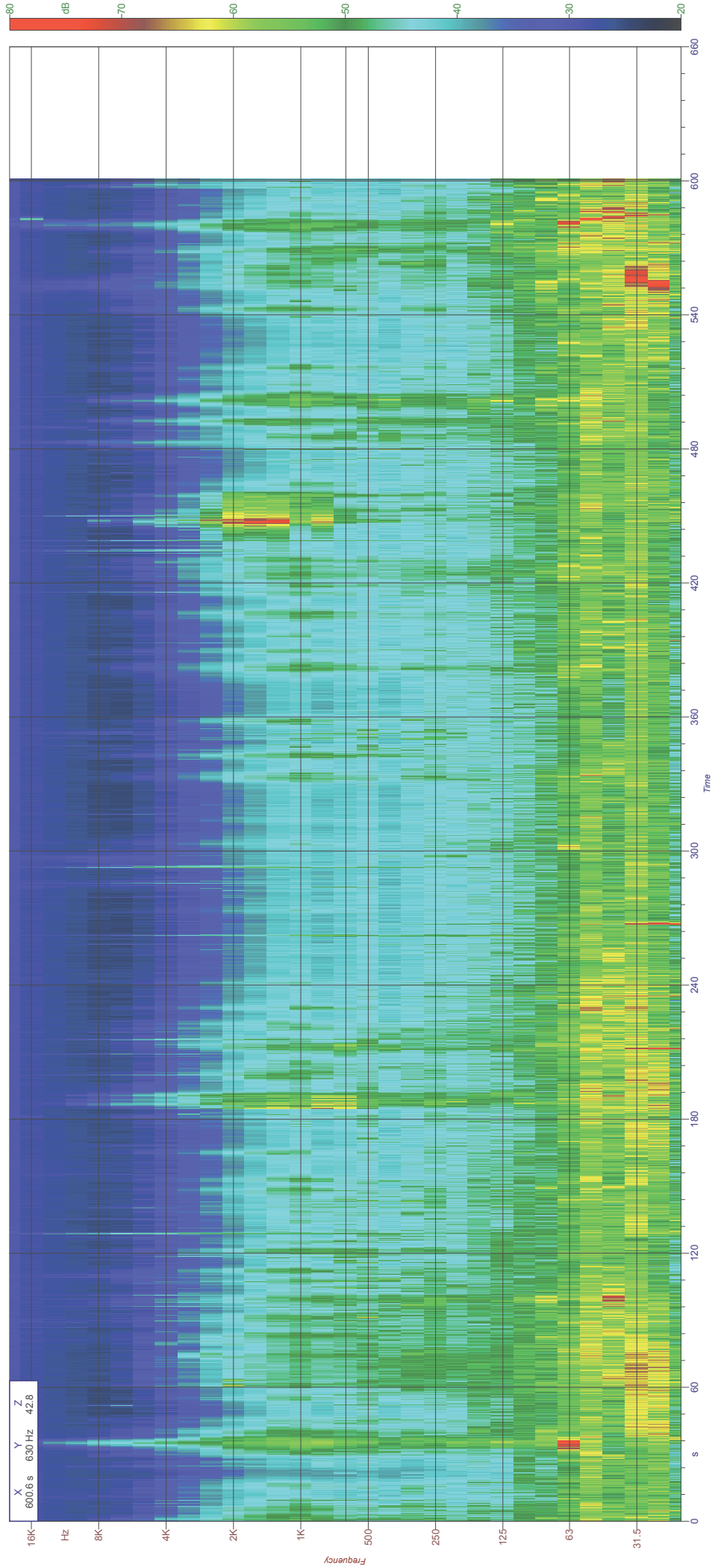
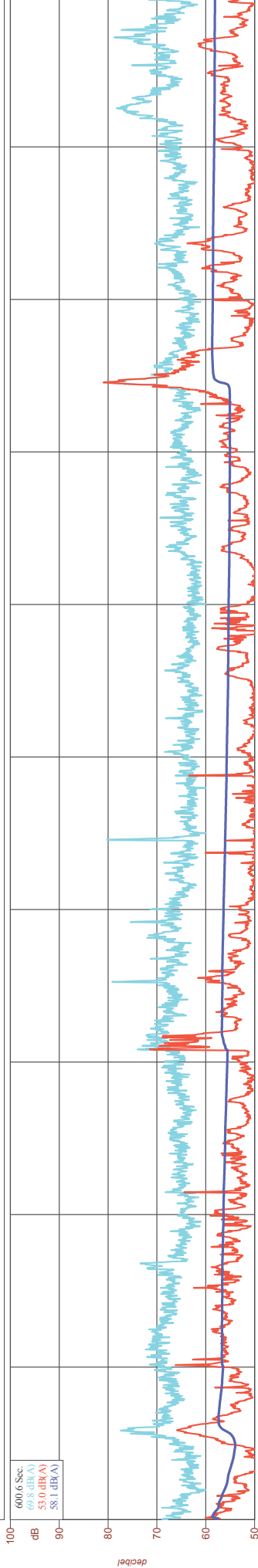
Ora: 11:37:34

LAEC: 58.1

LAF MAX: 81.0

rimini_2020_02_03_3
1/3 Ottava CH1 - OVERALL
Lineare

rimini_2020_02_03_3
1/3 Ottava CH1 - OVERALL
A - Running Leq



Date: 03/02/2020

Ora: 11:57:59

LAEC: 66.8

LAF MAX: 79.3

nmimi_2020_02_03_4
1/3 Ottawa CH1 - OVERALL
Lineare

nmimi_2020_02_03_4
1/3 Ottawa CH1 - OVERALL
A - Running Leq

